

Go!SCAN3D  TM

**THE FASTEST AND EASIEST
3D SCANNING EXPERIENCE**

CREAFORM 

AMETEK [®]

Go!SCAN3D™

WHEN EASE OF USE MEETS VERSATILITY AND PORTABILITY



The Go!SCAN 3D™ is our fastest, user-friendly handheld 3D scanner. A powerful tool during the product development phase, the Go!SCAN 3D quickly measures any complex surface making it possible to "get it right" the first time. With its seamless integration to your 3D modelling software and your product life cycle management workflow, it will greatly improve product development, foster innovation and shorten time to market.

Designed to scan any object without need for a set-up, it offers flawless texture and geometry acquisition as well as impressive details in a rich color palette. Just go... and scan!



**HIGH LEVEL
OF DETAILS**



**NO SET-UP
REQUIRED**



**ACCURACY UP TO
0.050 mm (0.0020 in)**



**WORLDWIDE
SUPPORT**



**COLOR
ACQUISITION**



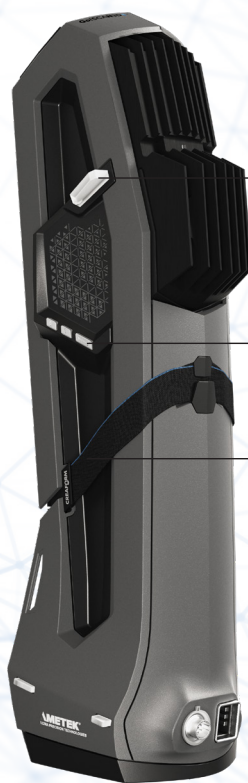
**PATENTED
TECHNOLOGY**



1

2

3



4

5

6

- 1 High-performance optics**
Optimal scan quality
- 2 White light technology**
Fast 3D scanning
- 3 Color texture camera**
Realistic color acquisition
and reliable tracking
- 4 Stand-off distance
meter display**
Maximizes scanning performance
- 5 Multifunction buttons**
Quick access to frequently used
software functionalities
- 6 Innovative design**
Outstanding user experience



SIMPLICITY & VERSATILITY

The user-friendliness of the Go!SCAN 3D is unrivaled, making it possible to scan both small parts and larger objects, regardless of the user's experience. The Go!SCAN 3D is designed to perform without any part preparation; simply point and shoot! It provides an instant preview during scanning, showing what's being captured in real-time.

Plug and play

Simple user interface and real-time mesh visualization

Scan any object with a single device

Positioning using geometry, color or targets



PORTABILITY

When it comes to portability, the Go!SCAN 3D is second-to-none. Everything about its design has been considered in order to make your work more efficient. Take it anywhere you need!

Lightweight

1.25 kg (2.7 lb)

Dynamic referencing

Both the object and scanner can be moved freely while scanning

Fits into a suitcase



SPEED

You need to get your work done quickly? The Go!SCAN 3D is our fastest technology. Most objects can be scanned in mere minutes and quickly integrated into your preferred reverse engineering, computed aided design or 3D printing software.

Instant mesh

Ready-to-use files

High measurement rate

Up to 1,500,000 measurements/s
99 white light scanning lines

Quick set-up

Up and running in less than 2 minutes



LEVEL OF DETAILS & SCAN QUALITY

The level of detail on the Go!SCAN 3D is simply astounding. Featuring full support of color, it provides spectacular results.

Reliable results

Resolution of 0.100 mm (0.0039 in)

High resolution for intricate details

TECHNICAL SPECIFICATIONS

Innovating technology that provides accuracy, simplicity, portability as well as real speed to your metrology-grade applications.

GoSCAN SPARK™

ACCURACY ⁽¹⁾	Up to 0.050 mm (0.0020 in)
VOLUMETRIC ACCURACY ⁽²⁾ (based on part size)	0.050 mm + 0.150 mm/m (0.0020 in + 0.0018 in/ft)
VOLUMETRIC ACCURACY WITH MaxSHOT Next™ Elite ⁽³⁾	0.050 mm + 0.015 mm/m (0.0020 in + 0.00018 in/ft)
MEASUREMENT RESOLUTION	0.100 mm (0.0039 in)
MESH RESOLUTION	0.200 mm (0.0078 in)
MEASUREMENT RATE	1,500,000 measurements/s
LIGHT SOURCE	White light (99 stripes)
POSITIONING METHODS	Geometry and/or color and/or targets
SCANNING AREA	390 x 390 mm (15.4 x 15.4 in)
STAND-OFF DISTANCE	400 mm (15.7 in)
DEPTH OF FIELD	450 mm (17.7 in)
PART SIZE RANGE (recommended)	0.1–4 m (0.3–13 ft)
TEXTURE RESOLUTION	50 to 200 DPI
TEXTURE COLORS	24 bits
SOFTWARE	VXelements
OUTPUT FORMATS	.dae, .fbx, .ma, .obj, .ply, .stl, .txt, .wrl, .x3d, .x3dz, .zpr, .3mf
COMPATIBLE SOFTWARE ⁽⁴⁾	3D Systems (Geomagic® Solutions), InnovMetric Software (PolyWorks), Metrologic Group (Metrolog X4), New River Kinematics (Spatial Analyzer), Verisurf, Dassault Systèmes (CATIA V5, SOLIDWORKS), PTC (Creo), Siemens (NX, Solid Edge), Autodesk (Inventor, PowerINSPECT)
WEIGHT	1.25 kg (2.7 lb)
DIMENSIONS (LxWxH)	89 x 114 x 346 mm (3.5 x 4.5 x 13.6 in)
CONNECTION STANDARD	1 X USB 3.0
OPERATING TEMPERATURE RANGE	5–40°C (41–104°F)
OPERATING HUMIDITY RANGE (non-condensing)	10–90%
CERTIFICATIONS	EC Compliance (Electromagnetic Compatibility Directive, Low Voltage Directive), compatible with rechargeable batteries (when applicable), IP50, WEEE
PATENTS	CA 2,600,926, CN 200680014069.3, US 7,912,673, EP (FR, UK, DE) 1,877,726, AU 2006222458, US 8,032,327, JP 4,871,352, EP (FR, UK, DE) 2,278,271, IN 266,573, US 7,487,063, CA 2,529,044, CA 2,810,587, US 8,836,766, JP 5,635,218, CA 2,875,754, EP (FR, UK, DE) 2,751,521, US 9,325,974, CA 2,835,306, CN 201280023545.3, CN 201280049264.5, JP 6,025,830, EP (FR, UK, DE) 2,875,314, CN ZL 201380029999.6, JP 6,267,700, EP (FR, UK, DE) 3,102,908, US 15/114,563, CN 201580007340X

(1) Typical value for diameter measurement on a calibrated sphere artefact.

(2) Performance assessed with traceable length artefacts using positioning targets. Objects with sufficient geometry/color texture can enable this level of performance without positioning targets. Results are obtained using integrated photogrammetry with volumetric accuracy optimization.

(3) The volumetric accuracy of the system when using a MaxSHOT 3D cannot be superior to the default accuracy.

(4) Also compatible with all major metrology, CAD, and computer graphic software through mesh and point cloud import.



Creaform Inc. (Head Office)
4700 rue de la Pascaline
Lévis QC G6W 0L9 Canada
T.: 1 418 833 4446 | F.: 1 418 833 9588
creaform.info@ametek.com | creaform3d.com

Authorized Distributor