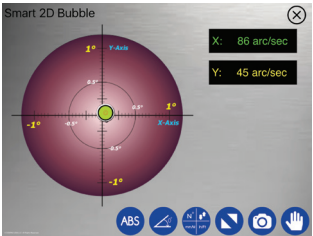


Professional Mobile Sync Apps

The user-friendly Digi-Pas® Level Mobile Sync Apps can be easily installed in smartphone or tablet to fully utilize the remote wireless Bluetooth mobile connectivity to the Digi-Pas® DWL-9000XY 2-axis Ultra Precision Inclinator, providing amazing user experience of 'one-man-operation' for machine installers to perform remote 2-axis simultaneous levelling & alignment task conveniently and speedily.

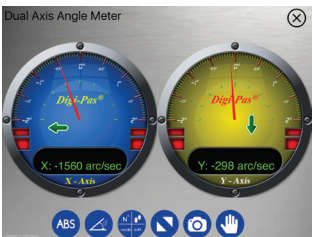
Android & iOS Apps Features



SMART 2D BUBBLE®

This feature enables user to view 2-axis angle/levelling measurement simultaneously in graphical bull's eye (with auto range feature) and numeric formats in arcsec & mm/M units.

Quality and productive works can be achieved by completely eliminating the hassles of levelling one-axis-at-a-time (trial-and-error) experienced when using conventional single-axis levels.



Single-Axis & Dual-Axis Angle Meters

This feature enables user to view single-axis or dual-axis angle/levelling measurement in numerical and graphical display i.e. arcsecond & mm/M units.

Features comparison

Features	Pc Sync Pro Edition	Mobile Sync Pro Edition	Mobile Sync Free Edition
3D Surface Flatness Graph	✓		
SMART 2D BUBBLE®	✓	✓	
Single-Axis Angle Meter	✓	✓	✓
Dual-Axis Angle Meter	✓	✓	
Single-Axis Angle Graph	✓		
Dual-Axis Angle Graph	✓		
Vibrometer Graph	✓		
USB Connectivity	✓		
Bluetooth Connectivity	✓	✓	✓

PC System Requirements

User's PC is recommended the following items to be installed for using the PC Sync Software:

- Microsoft framework 3.5 for 32bit Windows OS or
- Microsoft framework 4.0 for 64bit Windows OS
- Windows XP service pack 3 / Windows Vista / Windows 7

The following item are required:

- At least 1 GB Ram
- At least 100MB free disk space on hard drive
- Microsoft Excel 2007 and above
- USB 2.0 Port
- Bluetooth adapter (For Bluetooth Connection)

Supported Software Versions

- Android 4.4 & above
- iOS 8.0 & above

Note: Please check for latest version at www.digipas.com

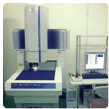
Applications :



Biomedical & Pharmaceutical



CNC Machine Alignment



CMM Levelling (Metrology)



Research Laboratory



Semiconductor Production Machines



Aerospace & Defence



Railway & Transportation System

Authorised Distributor:

www.digipas.com



Scan QR code or visit www.digipas.com

JCL-x-xxxxx-xx-xxx

2-Axis Ultra Precision Inclinator

Model : DWL-9000XY



Resolution
0.2 arcsec. or $\leq 1\mu\text{m/M}$

Digi-Pas® DWL-9000XY is a **2-Axis Ultra Precision Inclinator** with built-in Vibrometer, having resolution of **0.2 arcsec. and wide measuring range of 7200 arcsec or 33mm/M** for high precision leveling, tilted-plane angles measurements, 2D surface-plane profiling & precision alignment tasks, and capable of real-time wireless Bluetooth/USB remote measuring & data logging when used with PC Sync Software/ Mobile Sync App.

This instrument is exceptionally engineered to greatly simplifying the task of engineering professionals & scientists in installation, setting up, maintenance and characterization of very large-sized CNC machines, plane-surface flatness profiling, precision test/measuring instruments & 2D alignment-sensitive equipment.



Innovation & Technology Driven™

Manufacturer Representatives/
Distributors:



Digi-Pas® USA (Americas)
Digipas Technologies Inc.
info@digipas.com



Digi-Pas® Europe
Dutch Instruments
info@digipas.de



Digi-Pas® 迪派士™ China
Ipiranga(Shanghai) International Trade Co., Ltd.
info@digipaschina.com



Digi-Pas® Japan
JSB Tech Japan Co., Ltd
info@digipas.co.jp



Digi-Pas® South Korea
Phenix Trading Co., Ltd.
info@digipas.com



Digi-Pas® Singapore
JSB Tech Pte Ltd
info@digipas.com



ISO 14001:2004

ISO 9001:2008

2-Axis Ultra Precision Inclinometer

Instrument Overview

- 2-Axis colour graphic simultaneous display of leveling reading & surface geometry profile measurements
- Accuracy of ± 0.6 arcsec. At 0 ~ ± 100 arcsec.
- Built-in Vibrometer for real-time vibration measurement
- Real-time digital & analogue display
- Wireless Bluetooth/USB connectivity for remote data logging & analysis
- 3-points contact base for stable surface-to-surface contact to prevent “rocking”

Instrument Features



3D SURFACE GEOMETRY PROFILE GRAPH

Enable user to perform 3D surface flatness geometry measurement in 3-Dimensional visual graph when in synchronization with PC using Professional PC Sync software.



ANGLE METER

Real-time colour graphic display for single/dual-axis digital & analogue angle measurements, data acquisition & logging on device LCD screen or PC monitor.



VIBRO METER

Real-time colour graphic display for vibration measurement and data logging on device screen or PC monitor.



ALTERNATE ZERO SETTING

Enable user to measure relative angles at a common plane with respect to a reference angle set to zero.



ABSOLUTE LEVEL SETTING

Enables user to perform absolute symmetry readings for both “front” & “reverse” (180 degrees) positions of any measurement angle to determine zero datum with reference to center of gravity.



WIRELESS SYNC

Bluetooth wireless sync to computer/tablet/smartphone for remote measurement, data acquisition, logging & analysis.



TEMPERATURE COMPENSATED

The instrument/device is temperature compensated for the entire specified operating temperature range.

Technical Specification - DWL-9000XY

Measurement Range (Single Axis Mode)	0 to 7200 arcsec. (0.0000° to ± 2.0000°)
Measurement Range (Dual Axis Mode)	0 to 3600 arcsec. (0.0000° to ± 1.0000°)
Resolution	0.2 arcsec. (≤ 1µm/M)
Accuracy	±0.6 arcsec at 0 to ±100 arcsec.; ±1.2 arcsec at other angles
Repeatability	0.2 arcsec. (≤ 1µm/M)
Measurement Speed	≤ 25 Sec
Respond time	≤ 3 Sec
Vibrometer (Relative g)	2.0
Display	Colour TFT LCD
Power Supply	4 x AAA 1.5V Batteries / USB Power source
Material	PC ABS / Alloy Steel
Connectivity	Bluetooth Industrial Class 1 (≤ 30 metres) & USB 2.0 Cable (≤ 5 metres)
PC SYNC Software	Professional Edition (included)
Temperature Error	≤ ± 0.2arcsec/°C
Storage Temperature	-20°C to +50°C
Dimension (mm)	188 x 62 x 37
Nett Weight (Approximate)	1150 gram

Note : Product specification and appearance are subjected to change for improvement without prior notice.

Accreditation

DWL-9000XY instrument accuracy is verified by accredited 3rd party independent calibration & test bodies and National Metrology Centre traceable to SI standard and NIST, JIS, UKAS & DIN under CIPM MRA.

Advantages of 2-Axis Ultra Precision Inclinometer

SPEED, PRECISION & EFFECTIVENESS

Precision levelling, angle measurement/alignment and surface flatness profiling tasks essentially involve 2-dimensional planes rather than single-axis. Thus, 2-axis simultaneous display of surface plane angles readings are required to effectively guide engineers in adjusting precision object/machine to a targeted position accurately and speedily.

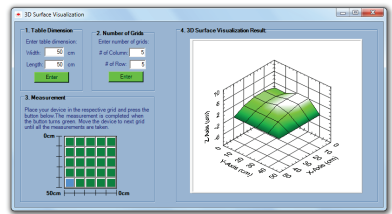
Digi-Pas® pioneered world's-first 2-axis simultaneous angles display instrument (U.S. patented) embedded with vibrometer which offers superior performance. It empowers engineers in eradicating constraints associated with using traditional single-axis 'bubble' or digital levels that require them to conduct those time-consuming tasks 'one axis at a time' with tedious trial-and-error iterations.

© 2020 DIGIPAS TECHNOLOGIES INC. All Rights Reserved.

Professional PC Sync Software

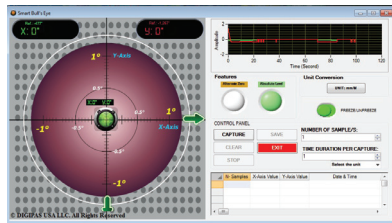
Digi-Pas® Professional PC Sync is a 'plug & play' user-friendly interface software (embedded with National Instrument software) specifically designed for ultra-precision application to enable remote real-time measurement, user-definable data acquisition & logging through wireless Bluetooth connectivity/USB cable with DWL-9000XY 2-Axis Ultra Precision Inclinometer.

PC Sync Software Features



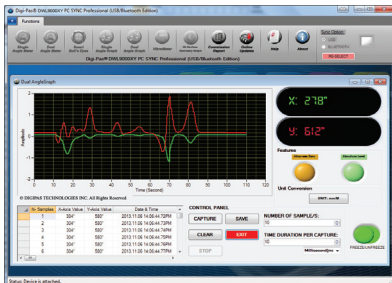
3D Surface Flatness Graph

- Enable 3D surface flatness geometry measurement, profiling and characterization
- 3D visual graph and numeric data can be saved in Excel file



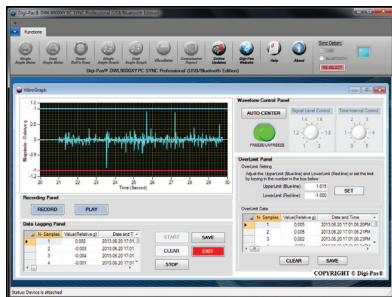
SMART 2D BUBBLE®

- Simultaneous graphical bull's eye (with auto range feature) and numeric display of 2-axis angle/levelling measurement
- Clear indication of a plane surface's elevation point simplifies 2D alignment tasks



Single-Axis & Dual-Axis Angle Graphs

- Line graph display and numerical readings for single-axis or dual-axis angle/levelling measurement
- Enables recording of machine's levelling status changes over a period of time



VibroMeter Graph

- Numerical and graphical display of vibration magnitude and pattern/graph for effective assessment of vibration conditions
- Fast sampling rate at 10ms (milliseconds) per data capture
- Vibration data can be saved in Excel file for production yield improvement and scraps reduction analysis



Single-Axis & Dual-Axis Angle Meters

- Real-time single-axis or dual-axis angle/levelling measurement in graphical and numerical display
- Large, easy-to-read display with units include arcsecond & mm/M

Authorised Distributors



Online Retailers

Available at amazon

Available at amazon.ca

Available at amazon.co.uk

Disponible sur amazon.de

Erhältlich bei amazon.fr

Disponibile su amazon.it

Disponible en amazon.es

Available at amazon.co.jp

Available at ebay

楽天 RAKUTEN